



ECRA: Knowledge for climate action

Newsletter Autumn 2020

Dear Readers,

Welcome to the Autumn 2020 ECRA newsletter, bringing updates from the Climate Research to you in those challenging times of COVID-19.

In this issue we are highlighting the recent activities and publications of the ECRA partners and participants, but also other contributions – for more information please see the table of contents on the next page.

In March 2021, we wanted to organise the ECRA General Assembly (GA), however, COVID-19 made us re-organise: mark your calendars for **10 March 2021** for a high-level ECRA online event. The GA will take place in **March 2022**. We welcome your contributions and interactions for both events!

Kind regards, and see you soon!

Prof. Peter Braesicke, Chair of ECRA
Prof. Len Sheffrey, Co-Chair of ECRA



Table of Content

ECRA Newsletter Spring 2020

To be updated...	
ECRA Statement on the ERC	<u>2</u>
<i>ECRA Collaborative Programmes:</i>	
CP Sea-Level Change and Coastal Impacts	
New Co-Lead Ingo Sasgen	<u>3</u>
Contributions of GRACE	<u>3</u>
Knowledge Hub on SLC	<u>4</u>
CP High Impact Events and Climate Change	
Special Sustainability Issue on HIE	<u>5</u>
Special Issue: Climate Bulletin Research	
Letters on ERA4CS projects	<u>6</u>
ECRA_GA21	<u>6</u>
Scientific Updates	<u>7</u>
Upcoming events and meetings	<u>8</u>
Membership: Welcome Nord.no	<u>10</u>
Imprint & Contact	<u>11</u>

ECRA Statement **XXX**

xxxx

Preface

Prof. Daniela Jacob

The challenges to limit global warming



Daniela Jacob offered ECRA to introduce our Newsletter and how the challenges to limit global warming are closely tied to the activities of ECRA.

Prof. Jacob is the Director of the Climate Service Center Germany (GERICS), a scientific organizational entity of Helmholtz-Zentrum Geesthacht (HZG).

She is member of the European Commission's **Mission Board on "Adaptation to Climate Change** including

"Societal Transformation" and was one of the coordinating lead authors of the IPCC Special Report on the impacts of global warming of 1.5° C above preindustrial level and one of the leading authors of the IPCC Fifth Assessment Report (Working Group 2).

Lorem Ipsum

"Neque porro quisquam est qui dolorem ipsum quia dolor sit amet, consectetur, adipisci velit..."

"There is no one who loves pain itself, who seeks after it and wants to have it, simply because it is pain..."

Lorem ipsum dolor sit amet, consectetur adipiscing elit. Aenean dui tellus, imperdiet a dui eu, dignissim

blandit ipsum. **Any update from Daniela?** , blandit

eu ipsum id, lobortis vehicula leo. Pellentesque in egestas libero. Quisque laoreet libero eu maximus pellentesque. Praesent rhoncus consectetur suscipit. Maecenas mollis tellus neque, eu lobortis lectus sagittis eu. Phasellus pellentesque consequat augue, id vestibulum ante lacinia eu. Donec a arcu porta, sagittis sapien nec, tempor dolor. Donec commodo ullamcorper dolor, id rhoncus eros rutrum

et. Pellentesque habitant morbi tristique senectus et netus et malesuada fames ac turpis egestas. Maecenas in nibh nisi. Quisque vel eleifend nunc. Ut consectetur rhoncus nisi. Maecenas semper interdum mi eget ullamcorper.

Fusce auctor posuere consectetur. In in mollis risus, quis interdum odio. Sed eget justo eget tellus rutrum feugiat. Etiam diam enim, pulvinar at aliquam malesuada, placerat ut sapien. Cras ex urna, mattis a iaculis eget, commodo quis mi. Sed congue eros eu augue pulvinar, a consectetur ipsum bibendum. Aliquam in tempus quam, et congue leo. Aenean finibus nibh leo, sed ullamcorper magna molestie vel. Mauris sit amet ullamcorper lacus, vel tempor risus. Vestibulum sit amet rhoncus nunc. Nunc vel lectus rhoncus, pretium turpis non, dapibus velit. Phasellus maximus id diam vitae eleifend. Duis gravida mauris non rutrum ullamcorper.

Sed ante sit amet velit finibus faucibus. Praesent sit amet sodales dolor. Nam sodales nunc id erat tempus posuere tincidunt eget nulla. Vestibulum sodales iaculis diam, euismod elementum elit porta id. Morbi blandit, augue

ASTERISKS



Call: H2020-LC-CLA-2018-2019-2020

Topic: **LC-CLA-12-2020**

Proposal title: Artificial Intelligence for Climate Services To Enhance Adaptation towards RISKS of Extremes

ECRA has joined a consortium led by the Finnish Meteorological Institute (FMI).

We have **submitted the second stage proposal** and are currently waiting for the decision of the European Commission.



ECRA-endorsed Project

PolarProC


Polar processes to global implications: Constraining uncertainty in a changing climate

Call: H2020-LC-CLA-17-2020: Polar climate: understanding the polar processes in a global context in the Arctic and Antarctic Regions.

The overall objective of PolarProC is to "Improve projections of Polar climate by better understanding the key physical and chemical processes and feedbacks in the atmosphere-ice-ocean and carbon cycle systems that control Polar climate change and its global implications, enabling robust policy and decision making".

ECRA General Assembly

Update

10 year anniversary of ECRA!! 

The COVID-19 made us reconsider our planning of our General Assembly, but finally we know what we can offer for March 2021 and the following time.

We originally planned to host the ECRA General Assembly on 10-11 March 2021, physically, in Brussels. However, we now announce to you that we will **postpone our General Assembly to March 2022**.

The agenda and outline of the GA will stay the same, or similar to the original format: a two day event, with high-level discussions on Day 1 and scientific talks and break-out groups on Day 2. So, tentatively, feel free to earmark 8-9 March 2022 for the ECRA GA.

The ECRA Executive Committee has started the planning and leans towards the topic of **Extreme Events** within the context of **climate change**, and how **decision making and risk management** could be tackled.

For **10 March 2021**, the original dates of the GA, we would like to invite you to a **high-level ECRA event** which will take place online. The original first day will be compressed into max. 2,5 h of a virtual meeting, including Mr. Jean-Eric **Paquet**, Director-General of the European Commission, DG RTD; Connie **Hedegaard**, Former European Commissioner for Climate Action and current Mission Board Chair (Climate Adaptation); Michel **Rixen**, WCRP, WMO; Carlo **Buontempo**, ECMWF/Copernicus; Rob **McSweeney**, CarbonBrief; and of course our Chair Peter **Braesicke**.

To summarise:

10 March 2021 – high level ECRA online event

March 2022 – ECRA General Assembly in Brussels

If you have input or want to sign up for updates, do not hesitate to approach the Secretariat via info@ecra-climate.eu.

International conference

Climate change and water

Extreme events, water and environments

RÉSEAU
MiDi

May 25-27th
2021

Auditorium Theleme
Tours, France



ccw2021.sciencesconf.org

Upcoming events

The **MiDi network** with **Isabelle LaJeunesse**, University of Tours, France, will organise the event “**Extreme events, water and environments**” in **May 2021**.

Due to COVID-19, the meeting will take place as a **webinar** (online) on **25-27 May 2021**.

To facilitate an open forum of exchange, another event will be organised in **2022**, with the original format and place (France).

More information to be found at the **event website** and during the conference:

<https://ccw2021.sciencesconf.org/>





Tipping points, extreme events and uncertainty: How can studying the Arctic help us predict future European climate beyond the mean?

ECRA, the BlueAction project, and the European Parliament Intergroup on "Climate Change, Biodiversity and Sustainable Development" organised this web-conference on 14 October 2020. Target audience were policy-makers, MEPs and stakeholders. Researchers leading on this topic (from Horizon 2020 climate research project Blue-Action) presented the current state of knowledge. The event included a panel discussion with MEPs and Blue-Action scientists, and was open to all.

Lars H. Smedsrud represented ECRA and the polar research perspective (see picture), further speakers and topics were: **Steffen M. Olsen**, Blue-Action Coordinator,

DMI; **Sigi Gruber**, Head of Marine Resources Unit, European Commission; Didier Swingedouw; Helene R. Langehaug; and many others. More information: ecra-climate.eu/BlueAction-ECRA-IG-event including a **recording** of the event..

Arctic Sea Ice Summer Loss: estimates

One soccer field lost every 0.8 seconds

In September 1980 we had about 7.5 mill km² (about 2 meters thick)
In September 2020 we had about 3.9 mill km² (about 1 meter thick)

Loss of 9000 m³ / second

Area of soccer field: 105 m * 68 m = 7140 m²

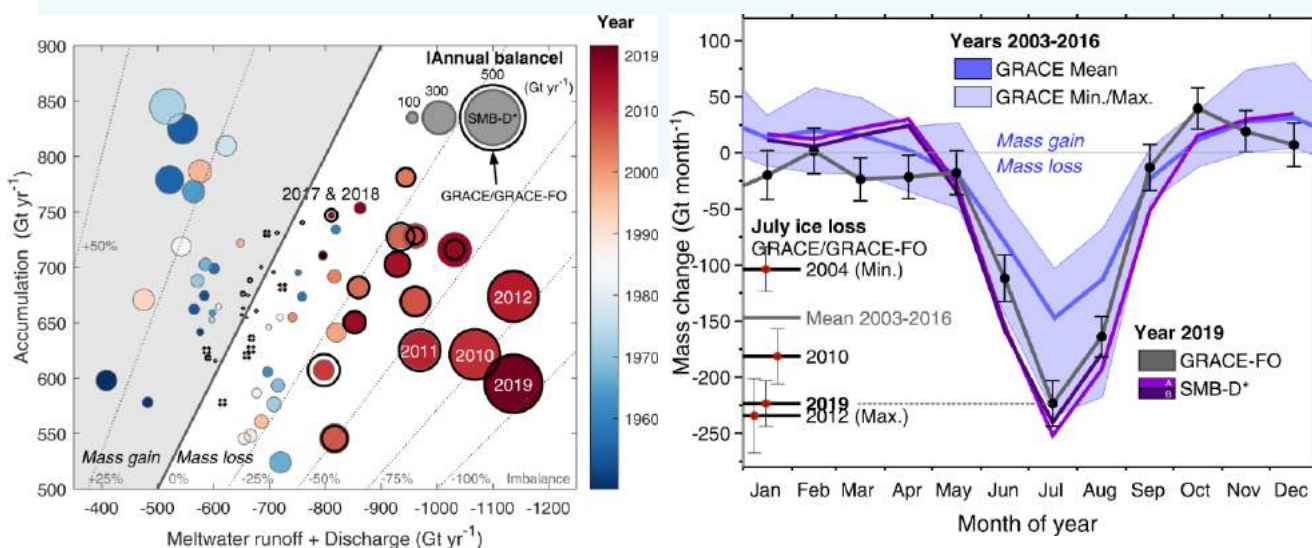
Publication .. From member of ECRA

- Info on your recent publications?
- Scientific updates from EGU GA,
- EMS meeting, barcelona 06-10 September 2021
-?

Return to rapid ice loss in Greenland and record loss in 2019 detected by the GRACE-FO satellites

[Sasgen, I.](#), Wouters, B., Gardner, A.S. et al. Return to rapid ice loss in Greenland and record loss in 2019 detected by the GRACE-FO satellites. *Commun Earth Environ* 1, 8 (2020). <https://doi.org/10.1038/s43247-020-0010-1>
[Press release](#) (AWI/GFZ)

Abstract Between 2003-2016, the Greenland ice sheet (GrIS) was one of the largest contributors to sea level rise, as it lost about 255 Gt of ice per year. This mass loss slowed in 2017 and 2018 to about 100 Gt yr⁻¹. Here we examine further changes in rate of GrIS mass loss, by analyzing data from the GRACE-FO (Gravity Recovery and Climate Experiment – Follow On) satellite mission, launched in May 2018. Using simulations with regional climate models we show that the mass losses observed in 2017 and 2018 by the GRACE and GRACE-FO missions are lower than in any other two year period between 2003 and 2019, the combined period of the two missions. We find that this reduced ice loss results from two anomalous cold summers in western Greenland, compounded by snow-rich autumn and winter conditions in the east. For 2019, GRACE-FO reveals a return to high melt rates leading to a mass loss of 223 ± 12 Gt month⁻¹ during the month of July alone, and a record annual mass loss of 532 ± 58 Gt yr⁻¹.



Airborne LiDAR and spectroscopic techniques to explore coastal erosion, protection and management

Taramelli, A., Valentini, E., Cappucci, S., Filipponi, F., Nguyen Xuan, A., Lisi I., Rossi L.

doi: <https://www.mdpi.com/2072-4292/12/7/1053> (sand bars)

doi: <https://www.mdpi.com/2072-4292/12/8/1229> (sand dunes)

Two recent publications of ENEA, ISPRA, CNR, IUSS, published on Remote Sensing (MDPI), contribute to deliver quantitative products along coastal areas. Emerged and submerged sand dunes have been studied by using LiDAR topobathymetric Digital Surface Model (DSM), Bathymetric Position Index (BPI) along the coastal stretch. Thanks to airborne hyperspectral dataset and field spectral libraries, a correlation model is applied to describe the continuum of dune cover typologies, and landscape ecology and morphology. The methodology provide the harmonization procedure of coastal morphological dataset definition at the national scale and results have been used by the authorities to adopt a novel beach management technique. Their implication to mitigation and adaptation of littorals to erosive phenomena and the medium-long term effects of climate change through Mediterranean coastal areas protection is relevant.

Enhanced water supply and management strategies on small islands

Cappucci, S., De Cassan, M., Grillini, M., Proposito, M., Screpanti, A.

doi: <https://doi.org/10.1007/s10040-020-02138-6>

A recent paper on the evaluation of the quantity and quality of groundwater in small islands, ready to be exploitable in a sustainable way by the population during droughts or in case of great tourist pressure. Thanks to a study conducted by ENEA (published in the Hydrogeology Journal), a multidisciplinary team opens new and interesting scenarios that may globally affect the isolated communities of small islands and their potential development related to natural freshwater reserves in relation to global climate change.

More information:

<https://www.enea.it/en/news-enea/news/environment-enea-finds-fresh-water-in-small-islands-to-limit-tankers>



Publication .. From member of ECRA

- Updates from CP HIE
- CP SLC
- CP CHC

jakslfjaksldfjlk Fasf jakslfjaksldfjlk Fasf jakslfjaksldfjlk Fasf
jakslfjaksldfjlk Fasf

Publication .. From member of ECRA

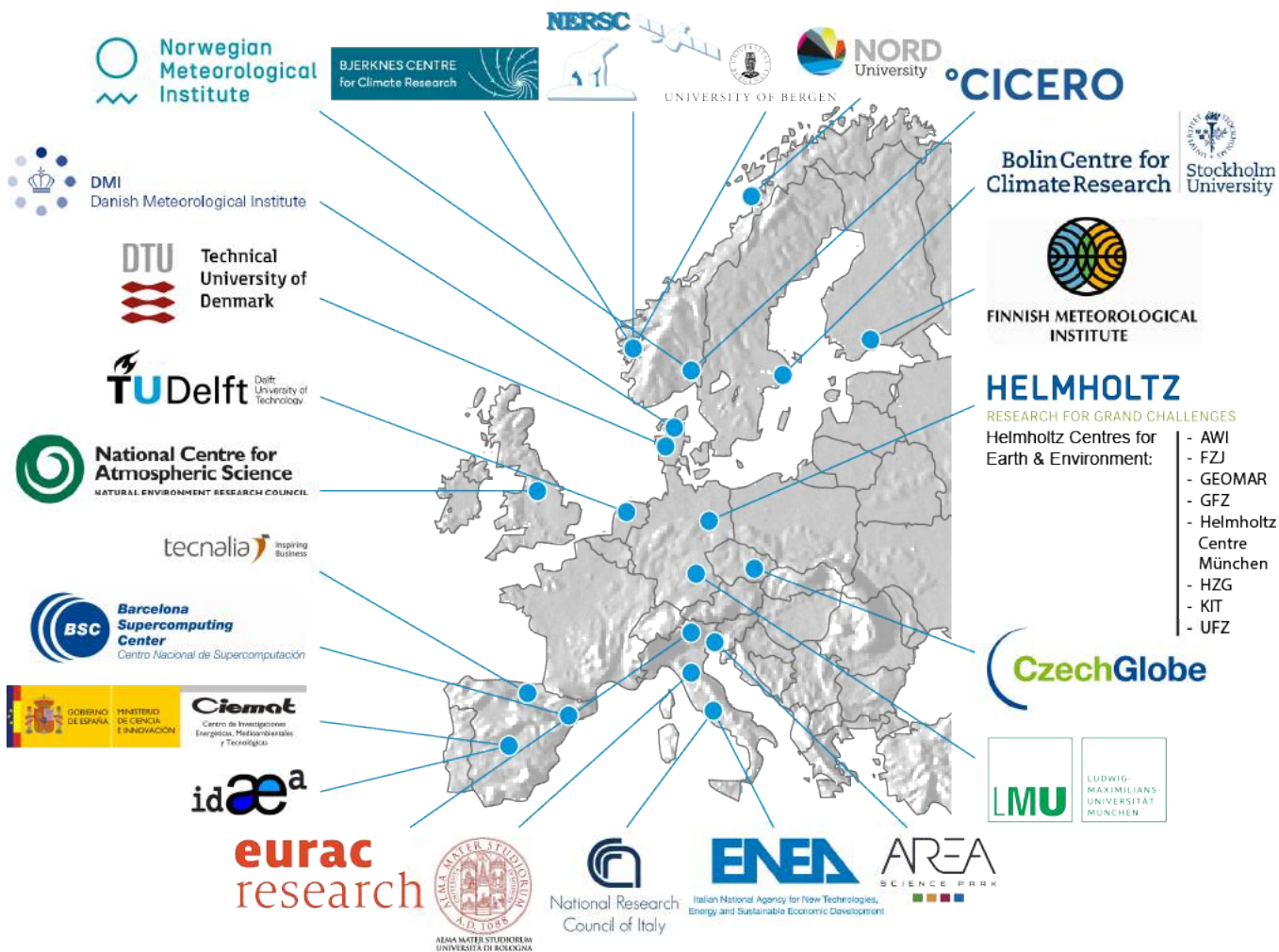
Fasf jakslfjaksldfjlk Fasf jakslfjaksldfjlk Fasf jakslfjaksldfjlk Fasf
jakslfjaksldfjlk Fasf jakslfjaksldfjlk Fasf jakslfjaksldfjlk Fasf
jakslfjaksldfjlk Fasf jakslfjaksldfjlk Fasf jakslfjaksldfjlk Fasf
jakslfjaksldfjlk Fasf jakslfjaksldfjlk jakslfjaksldfjlk Fasf jakslfjaksldfjlk
Fasf jakslfjaksldfjlk Fasf jakslfjaksldfjlk Fasf jakslfjaksldfjlk
jakslfjaksldfjlk Fasf jakslfjaksldfjlk Fasf jakslfjaksldfjlk Fasf
jakslfjaksldfjlk Fasf jakslfjaksldfjlk Fasf jakslfjaksldfjlk Fasf
jakslfjaksldfjlk Fasf jakslfjaksldfjlk Fasf jakslfjaksldfjlk Fasf
jakslfjaksldfjlk Fasf jakslfjaksldfjlk Fasffa afds

Publication .. From member of ECRA

Fasf jakslfjaksldfjlk Fasf jakslfjaksldfjlk Fasf jakslfjaksldfjlk Fasf
jakslfjaksldfjlk Fasf jakslfjaksldfjlk Fasf jakslfjaksldfjlk Fasf
jakslfjaksldfjlk Fasf jakslfjaksldfjlk Fasf jakslfjaksldfjlk Fasf
jakslfjaksldfjlk Fasf jakslfjaksldfjlk Fasf jakslfjaksldfjlk Fasf
jakslfjaksldfjlk Fasf jakslfjaksldfjlk Fasf jakslfjaksldfjlk Fasf
jakslfjaksldfjlk Fasf jakslfjaksldfjlk Fasf

Publication .. From member of ECRA

Fasf jakslfjaksldfjlk Fasf jakslfjaksldfjlk Fasf jakslfjaksldfjlk Fasf
jakslfjaksldfjlk Fasf jakslfjaksldfjlk Fasf jakslfjaksldfjlk Fasf
jakslfjaksldfjlk Fasf jakslfjaksldfjlk Fasf jakslfjaksldfjlk Fasf
jakslfjaksldfjlk Fasf jakslfjaksldfjlk Fasf jakslfjaksldfjlk Fasf
jakslfjaksldfjlk Fasf jakslfjaksldfjlk Fasf jakslfjaksldfjlk Fasf
jakslfjaksldfjlk Fasf jakslfjaksldfjlk Fasf



ECRA: Knowledge for climate action

For any questions...

European Climate Research Alliance

ECRA Executive Secretary

Winfried Hoke

Winfried.Hoke@ecra-climate.eu

www.ecra-climate.eu

[@ECRA_Climate](https://twitter.com/ECRA_Climate)

Rue du Trône 98

1050 Brussels, Belgium

Phone: +32 (0) 2 5000 983

Fax: +32 (0) 2 5000 980

