



ECRA General Assembly 2015

“New knowledge for risk reduction”

Karin Lochte

ECRA - chair

Director Alfred Wegener Institute (Germany)

The European Climate Research Alliance (ECRA) is an association of leading European research institutions in the field of climate research.

ECRA is a bottom-up initiative launched in 2011, and focusing on the objective to bring together, expand and optimize European expertise in climate research by sharing existing national research capacities and infrastructures.

4th of October 2011 European Parliament



“Added Value” for European Research

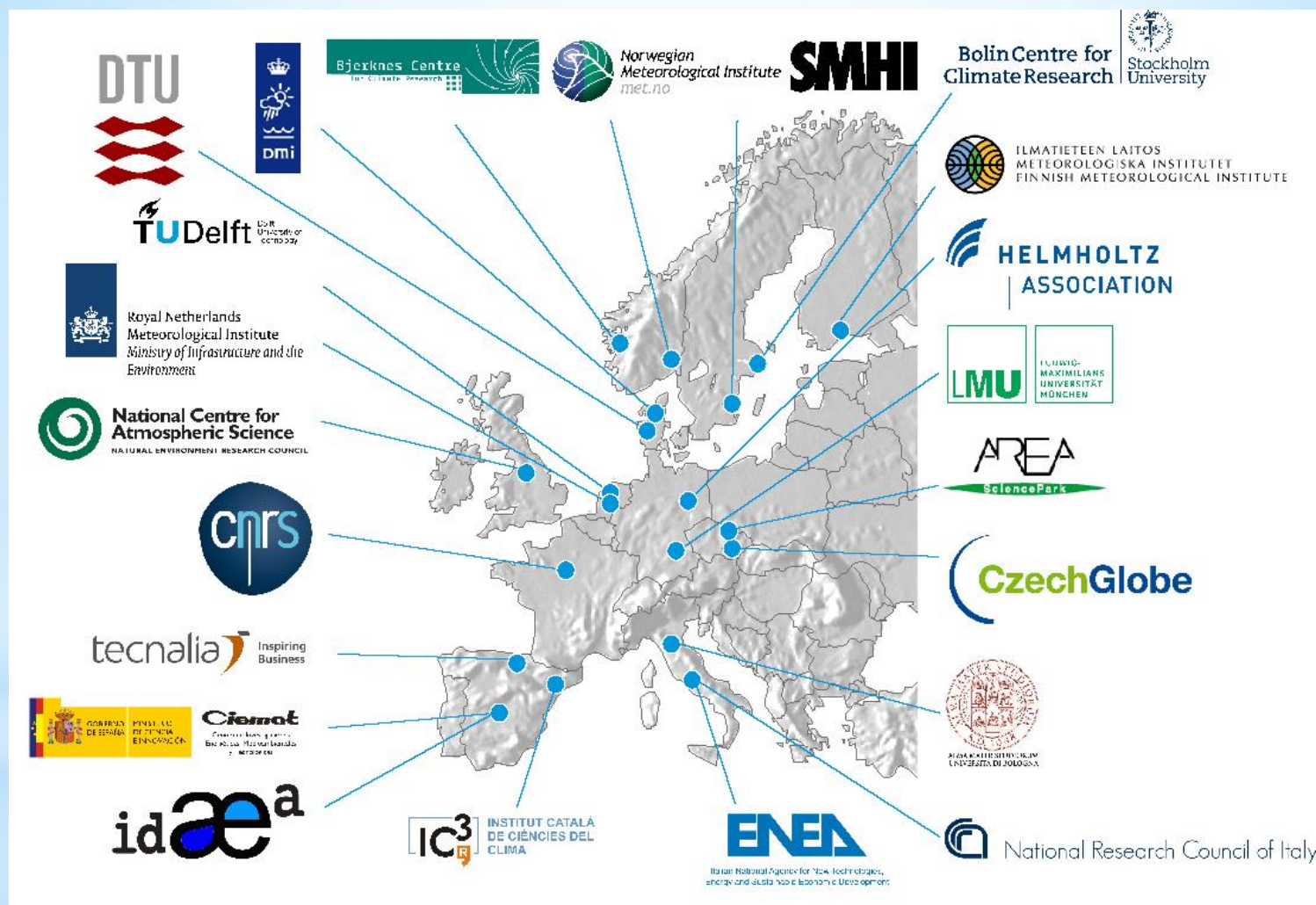
- **Bottom-up approach** for research strategy based on scientists and participating scientific institutions
- **Platform for joint research planning and activities** in European climate research (national/European)
 - Common strategy to tackle research questions
 - Exchange of information (science, funding)
 - Exchange of personnel (within CPs)
 - Optimised use of existing infrastructure (e.g. data centres)
- **A unified voice** for climate research in Europe

Key objectives:

- Accelerate the development of climate change research
- Work towards a long term, durable integration of excellent but dispersed research capacities across Europe
- Strengthen Europe's capacity to initiate and execute large fundamental and comprehensive research and development programmes in climate science.

Membership

- **Partners** (full membership, one per country)
-->> 11 Partners – 11 European countries
- **Participants/Associates**
->> 11 Participants/Associates



Tasks

- Work in **Collaborative Programmes** (*open to all*)
- Provide **advice to policy and public** in respect to climate change (*HORIZON 2020*)
- Develop **training, education and outreach activities** (*particularly for young researchers*)
- Develop **links and sustained partnerships with industry** to strengthen the interplay between research outcomes and innovation and to foster the early take-up of promising results


Collaborative Programmes (CP):

- **Arctic Climate Stability and Change (Arctic)**
coordinated by AWI/Germany and Bjerknes Centre Norway
- **High Impact Events and Climate Change (HIE)**
coordinated by KIT/Germany and DTU/Denmark
- **Sea level and Climate Change (SLC)**
coordinated by ENEA/Italy and NERSC /Norway
- **Changes in the Hydrological Cycle (CHC)**
coordinated by CNR/Italy and LMU/Germany

Tasks

- Work in **Collaborative Programmes** (*open to all*)


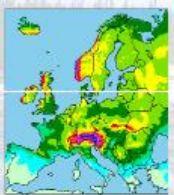
>> *meetings once a year*



Announcement for the 2nd Workshop of the
ECRA – Collaborative Program ‘Changes in the Hydrological Cycle’

Cross-scale Interactions in the Continental Water Cycle

The workshop focuses on innovative modeling approaches on:

- Topic 1: Climate downscaling methods for assessing impacts on the water cycle and on ecosystems
- Topic 2: Atmosphere-soil-vegetation interaction at multiple scales
- Topic 3: Extreme precipitation events and their effects on eco-hydrological systems
- Topic 4: Cross-scale interaction and macrosystem eco-hydrology

The workshop is intended to bring together researchers interested in advancing science by exchanging on recent findings and current limits in the above mentioned topics. Participants are invited to discuss their latest research findings in presentations (~25 min) or posters. The format of the 2-day-event is meant as a forum to exchange, discuss and to contribute to a joint publication, shaping and proposing the future research directions in the field.

Dates: 30-31 October 2014

Joint ECRA – ADSIMNOR Workshop on

Joint ECRA / CEN / CIISAP / CLIVAR / WCRP workshop

September 2013
Hamburg, Sweden

CHANGE

2/3 June 2014
Copenhagen, Denmark

deliver better science for
for developing research
in the science of extreme

ER 2013

HAMBURG

Tasks

- Work in Collaborative Programmes

>> Strategy and Work Plan

CP Arctic: June 2014

www.ecra-climate.eu



Table of Contents

EXECUTIVE SUMMARY	I
Table of Contents	II
1. Introduction	1
2. Mission Statement	2
3. Key Scientific Questions	2
4. Research Plan	3
4.1 Challenge 1: Why is Arctic sea ice disappearing so rapidly?	3
4.1.1 Overview	3
4.1.2 Selected research challenges	3
4.1.3 Selected activities	4
4.2 Challenge 2: What are the local and remote impacts of Arctic climate change?	4
4.2.1 Overview	4
4.2.2 Selected research challenges	5
4.2.3 Selected activities	5
4.3 Challenge 3: Advancing environmental prediction capabilities for the Arctic and beyond	5
4.3.1 Overview	5
4.3.2 Selected research challenges	6
4.3.3 Selected activities	6
5. Strategies to Achieve the Goals / Implementation mechanisms	7
5.1 Key objectives	7
5.2 Task Teams as a way of operating within Arctic ECRA	7
5.3 Workshops	7

society"



ra-climate.eu

sion: 19.06.2014

Tasks

- Provide **advice to policy and public** in respect to climate change (*HORIZON 2020*)

>> Public Stakeholder consultation from EU Commission

>> Parliamentarian Lunches: Science briefing

- The changing mountains of Europe: water resources and ecosystems at risk (2013)
- Arctic climate change: Mechanisms, impacts and predictability (2013)

Mountains of Europe: Water Resources and Ecosystems at Risk

October 2013, 12:30 – 14:00 (including lunch)
Parliament Members' Restaurant, Brussels



Strengthening Climate Research in Europe



www.ecra-climate.eu

The changing mountains of Europe: Water Resources and Ecosystems at Risk

Briefing Document

► Register at ecra-climate.eu

- What are the changes?
- What are the future risks?
- How can we adapt to climate change?
- What are the ecosystem services?



Contact:
Dr. Andreas Krell
Executive Secretary
European Climate Research Alliance
andreas.krell@ecra-climate.eu
<http://www.ecra-climate.eu/>

te
n



Martin Beniston University of Geneva
Maria del Carmen Llasat University of Barcelona
Elisa Vuillermoz Ev-K2-CNR
Wolfram Mauser LMU Munich



Organised by **Ralf Ludwig** and **Antonello Provenzale**

Arctic climate change: Mechanisms, impacts and predictability

Hosted by Dan Jørgensen, MEP Danish Social Democrats

Wednesday 24 April 2013, 12:30 – 14:00 hours (including lunch)
Members' Salon **ASP oG**, European Parliament, Brussels

Discuss with leading European climate scientists:

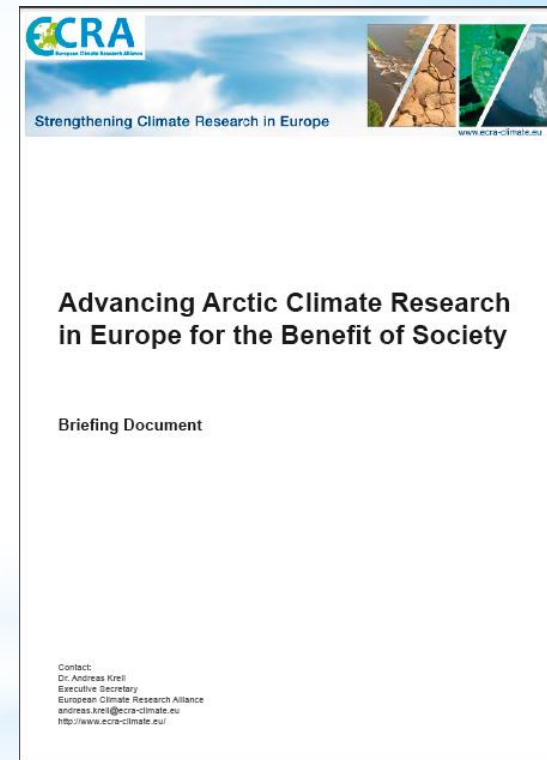
- Why is Arctic sea ice disappearing so rapidly and how fast will it melt in the future?
- What are the impacts of Arctic climate change, both locally and over the rest of Europe?
- How predictable is Arctic weather and climate?
- What does it take to become more certain about Arctic climate changes?



Arctic Climate

Science Briefing for Policy-Makers

Arctic climate change: Mechanisms, impacts and predictability



Tasks

- Develop **training, education and outreach activities**
(*particularly for young researchers*)

>> **Student grants** for Workshop global and regional sea level variability and change to engage for CP Sea Level Change (Mallorca Spain, 10-12 June 2015)

>> **Letter of support for projects on training activities** of ECRA organisations (link to ECRA activities, e.g. Collaborative Programmes and their workshops)

Outreach

>> Side events at Conferences:

e.g. EGU 2013, Cordex 2013

>> Newsletters (every three months)

1. ECRA

EGU General Assembly 9 April 2013, Vienna

"Shaping future climate research in Europe"



Key note by Dr. Andrea Tilche (DG R&I)
followed by a panel discussion with:

- Dr. Paolo Ruti, ENEA, Vice-Chair ECRA
- Prof. Dr. Valerio Lucarin, Hamburg Univ., DE
- Dr. Sylvie Joussaume, CNRS-IPSL, FR
- Dr Peter Braesicke, NCAS, UK





WHEN MODELS (DON'T) MEET OBSERVATIONS

SCALE CHALLENGES IN HIGH RESOLUTION CLIMATE MODELLING

Tuesday November 5 6 – 7:45 pm

Charlemagne Building [Brussels](#)

Model data on a variety of scales will require continuous confrontation with observational data to facilitate the further improvement of models. In a similar way impact modellers require observations to validate their models and high resolution model output to deliver assessments of future change. Thus the crucial question is **“How can future generations of high resolution climate models be improved and verified through observational data and are we able to provide long-term reliable observations at this scale?”**

This challenge is too broad and complex to be addressed by a single research group or institution, it requires a collaborative approach. During this side event, we will discuss the above topic from the perspective of researchers participating in the European Climate Research Alliance and will use the opportunity to link to the CORDEX community.

Keynotes

Jens Hesselbjerg Christensen

“How bad can it be?”

Dealing with imperfect models”

Thomas Jung

“Challenges and prospects of high-resolution climate modelling”

followed by a

Panel Discussion

Organised by

Special Session during the International Conference on Regional Climate - CORDEX 2013



Tasks

- Develop **links and sustained partnerships**
 - >> Partnerships are developed with JPI Climate and with the European Polar Board (via CP Arctic ECRA)
- Develop **links and sustained partnerships with industry**
 - >> Links to industry are still an open issue.



Morteratsch Gletscher

Europe has to be prepared for future climate developments and risks. To this end ECRA will

- >> provide a stable platform for scientific development
- >> support climate research in Europe through its special type of organisation and the Collaborative Programmes
- >> improve collaboration with other climate research initiatives